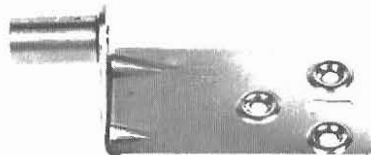




# ART. 1133A-35A-38A-41A-1140B

Guarnitura per ribaltare l'allunga centrale del tavolo mediante perni e fresatura nelle traverse del quadro

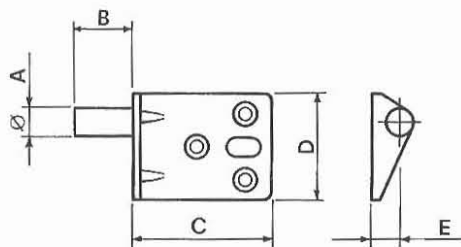
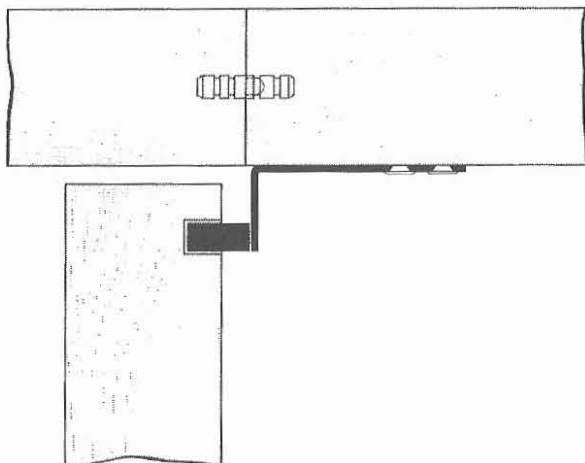
Tipo A



Tipo B

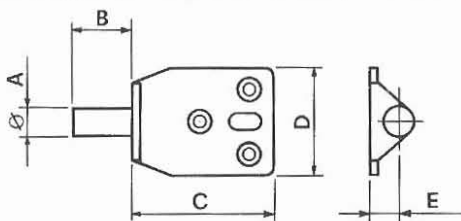


## CARATTERISTICHE DIMENSIONALI



Tipo A

Tipo B

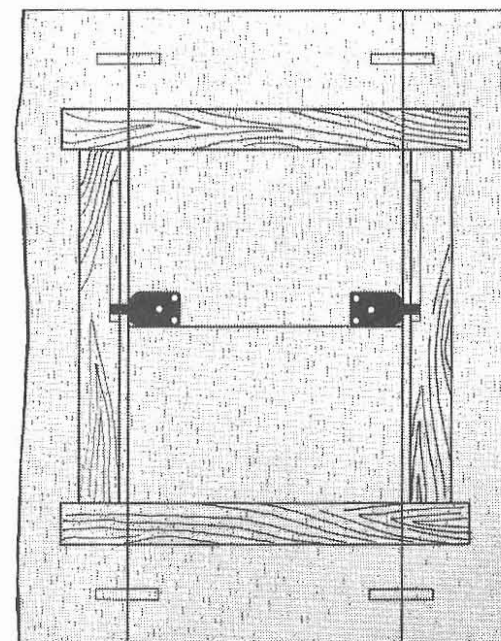


## TIPOLOGIA

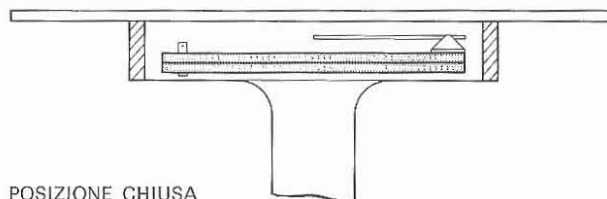
Art.	A mm	B mm	C mm	D mm	E
ART. 1133A	8	15	37,8	32	8
ART. 1135A	10	18	34,3	32	11,5
ART. 1138A	10	18	55,5	32	11,5
ART. 1141A	10	8,6	55,5	32	11,5
ART. 1140B	10	18	41	30	9

Montaggio: adatta per fig. 1 e 2 (2ª di copertina)

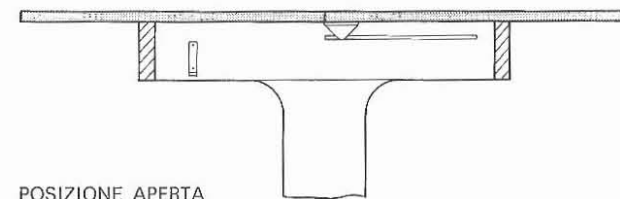
## IMPIEGO



È la soluzione più economica in quanto, applicando i perni girevoli e operando una fresatura nella traversa del quadro, si ottiene il funzionamento desiderato.  
Fori: 3,2 svasati



POSIZIONE CHIUSA



POSIZIONE APERTA