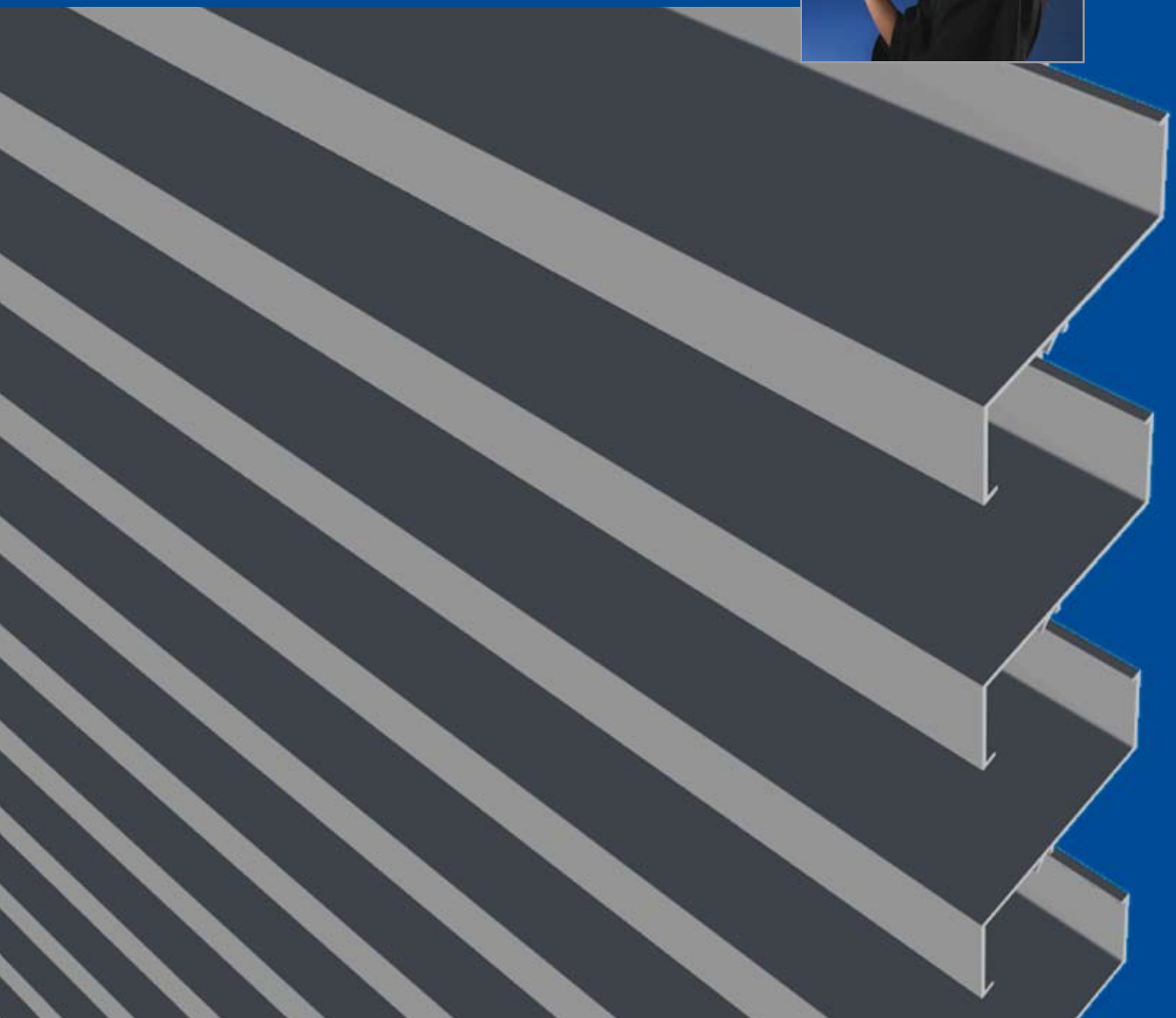


LINIUS BLADE FOR LARGE UNSUPPORTED SPANS AND FASTER INSTALLATION

BLADE TYPE L.120

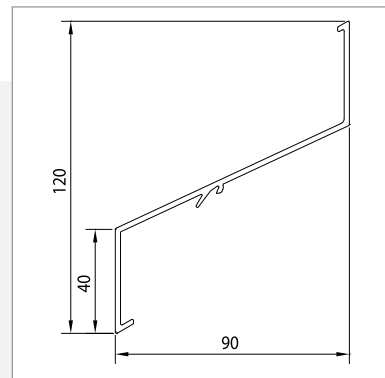
- Span size: up to 2,000 mm
- Blade pitch: 120 mm
- Fast installation



TYPE L.120

DESCRIPTION

Extruded aluminium profile for large unsupported span with very high air flow and a pitch of 120 mm. Improved installation speed thanks to a small number of clips and blades.

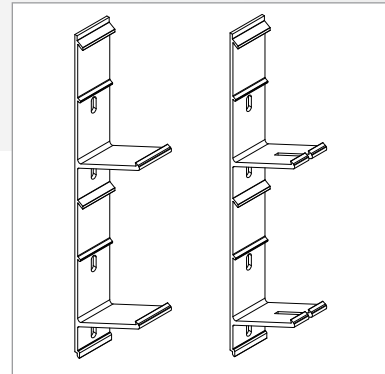


MATERIALS

Aluminium extrusion, alloy EN AW-6063 T66

SURFACE TREATMENT

- Anodised (20 microns) F1
- Polyester powdercoating RAL or Syntha Pulvin® colours (60-70 micron / 40 micron (UK))

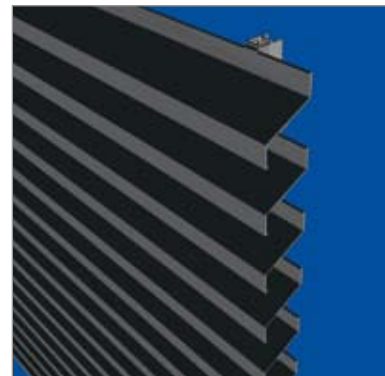


MESH

Optional and can be fixed to rear of support structure

DOORS

Single and double doors are available, rotating on top and bottom pivots and with the standard RENSON finish hardware.



BLADE SUPPORT

Single blade support: Type L.120.11

Double blade support for thermal expansion: Type L.120.12

TECHNICAL DATA TYPE L.120

- Pitch: 120 mm
- Depth: 90 mm
- Height: 120 mm
- K-Factor, supply: 12.62
- K-Factor, extraction: 12.50
- Visual free area: 66%
- Physical free area: 60%
- Max. unsupported span between two mullions: 2,000 mm

**FITTING:
UP TO 2X
FASTER!**

© Renson Ventilation NV, Waregem, 2008

All rights reserved. No part of this publication may be reproduced, stored in an automated retrieval system or made available in any form or in any way, whether electronic or mechanical, including photocopying, recording or any other manner without the prior written permission of the author.

Conditional technical changes • The most recent edition of the brochure can be downloaded on www.renson.eu

RENSON BELGIUM • IZ 2 Vijverdam • Maalbeekstraat 10 • 8790 Waregem • Belgium
Tel. +32 (0)56 62 71 11 • Fax +32 (0)56 60 28 51 • info@renson.be • www.renson.eu

RENSON Fabrications LTD (UK) • Fairfax Units 1-2-3 • Bircholt Road • Parkwood
Ind Est • Maidstone • Kent • ME15 9SF • Sales Tel. 01622/754123 •
Fax 01622/689478 • Fax 01622/689479 • info@rensonuk.net • www.renson.eu

 **RENSON**
INNOVATION IN VENTILATION

© L2006403 09/08