

TWIN QUASAR-S

Chain actuator with encoder - Force in push action 600 N - Maximum stroke 500 mm



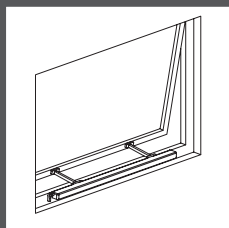
- Stainless steel double link chains.
- The control electronic circuit synchronizes the speed of the motors through encoder.
- Anodized (silver) or painted (white or black) aluminium casing.
- The manual closing position regulation is not required: the stop in closing position is regulated by an electronic limit switch.
- Being provided with two chains, it is particularly suitable for very wide windows (minimum 1550 mm width). For a better aesthetic result, on request, it is possible to supply actuators with customized distance between the chain (minimum 700 mm) in order to install an actuator as long as the window.
- Supplied with 1,5 m cable and pivoting brackets.
- The installation without brackets is possible only if the height of the vent is at least 1500 mm.
- In case of vents with four-bar hinges, please contact our Technical Dpt. for choosing the suitable fixing bracket.
- If installed on PVC windows, the profile has to be reinforced.
- 24 Vdc version is suitable for installation on smoke and heat extraction systems in conformity to UNI EN 12101-2 Standard.

	TWIN QUASAR-S AC	TWIN QUASAR-S DC
VOLTAGE SUPPLY	100-240 Vca	24 Vcc ± 10%
ELECTRIC CONNECTION OPERATION	3 wires + earth	2 wires by polarity inversion
STROKE	500 mm	500 mm
FORCE (IN PUSH AND PULL ACTION)	600 N	600 N
SPEED	~ 15 mm/s	~ 15 mm/s
CURRENT ABSORPTION (WITH MAX LOAD)	0,8 - 0,4 A	1,8 A
PARALLEL CONNECTION	YES	YES
LIMIT STOP	Electronic	Electronic
SAFETY STOP	Electronic	Electronic
IP PROTECTION	IP 30	IP 30

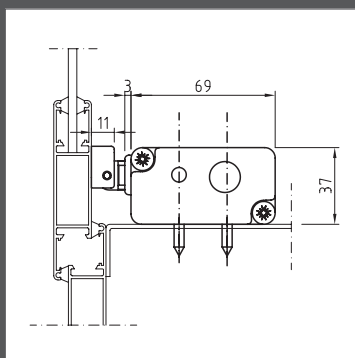
PART No.

SILVER ANODIZED	40989D	40992G
DARK BRONZE ANODIZED	40990E	40993H
WHITE PAINTED RAL 9010	40991F	40994I

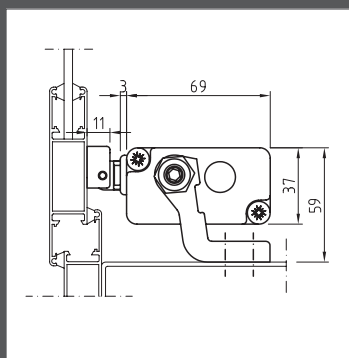
Installation examples



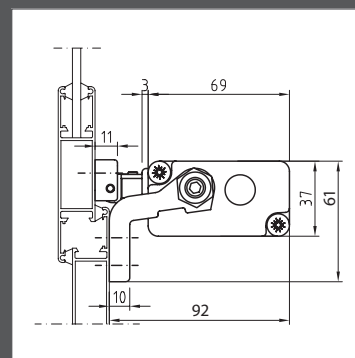
Top hinged window



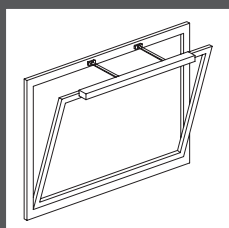
On windowsill without brackets



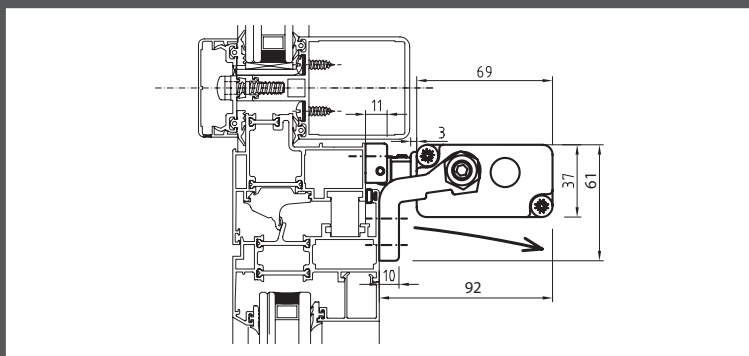
On windowsill with pivoting brackets included



On the frame with pivoting brackets included



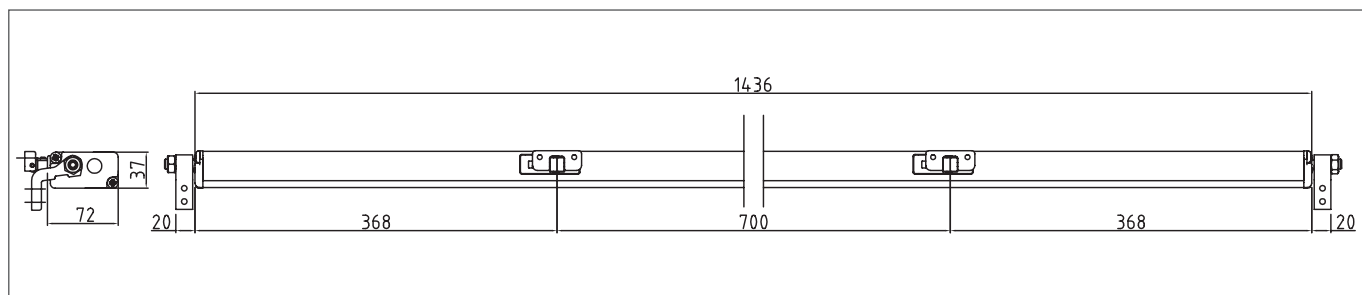
Bottom hinged window



On the vent with pivoting brackets included

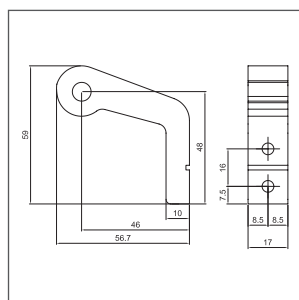
SPECIFICATION PROSPECTS

Electric chain actuator Ultraflex Control System named Twin Quasar-S with two stainless steel double link chains and electronic circuit for the two internal motors control. Force 600 N. Stroke 500 mm. Voltage supply 100-240 vac or 24 Vdc. Electronic limit stop and electronic stop in the intermediate positions in case of overload. Pivoting brackets included. Parallel connection. Aluminium casing anodized or painted. Conform to 2006/95/CE and 89/336/ CEE directives (the 24 Vdc version is conform to 89/336/CEE direction).



Actuator dimensions

Accessories



Pivoting brackets kit (2 pcs included)



The instructions for a safe installation are included in the section "SECURITY WARNINGS"