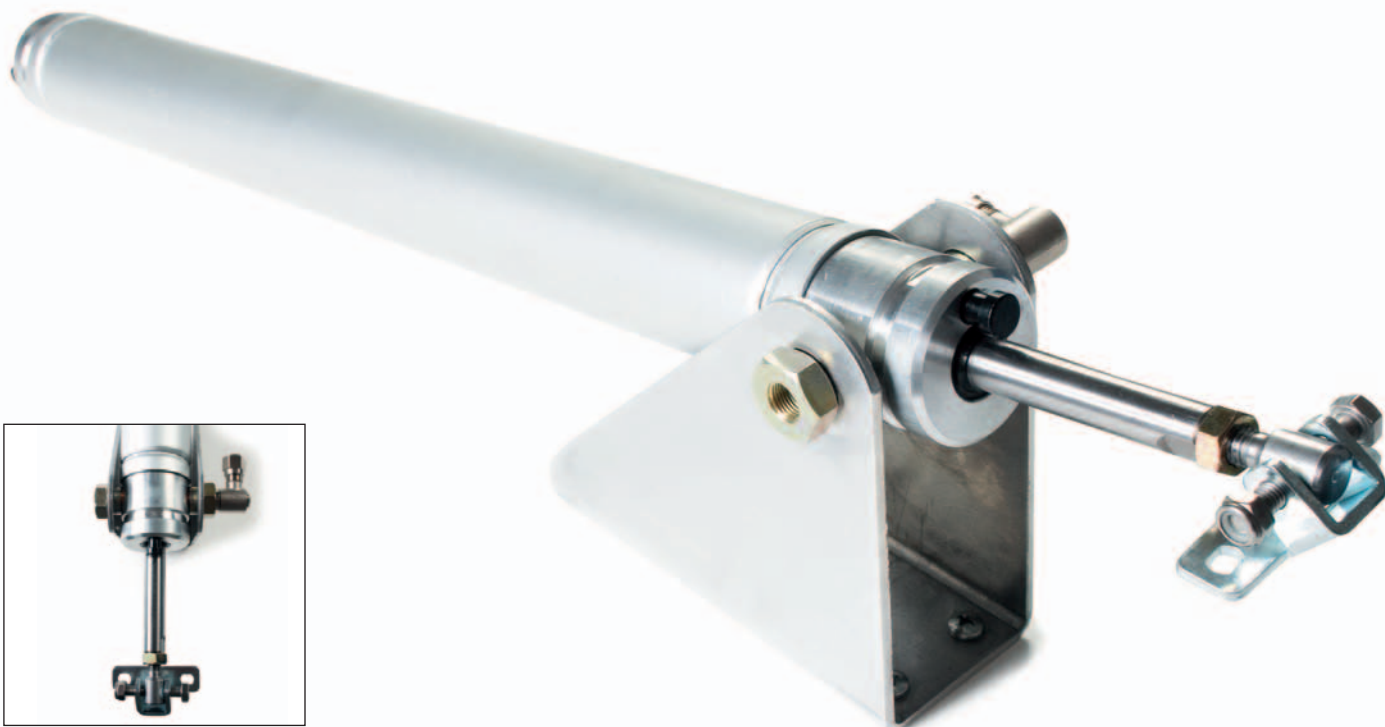


# PNEUMATIC CYLINDERS

Pneumatic systems for smoke and heat extraction



- The Redline cylinder are manufactured using corrosion-resistant materials. Their high efficiency is due to the minimum friction offered by special gaskets.
- Suitable for smoke and heat extractors according to the UNI 9494 regulations
- Double action cylinders, they can open and close
- Provided with a mechanical locking device in the end stroke positions. It can be pneumatically or manually (pressing the corresponding end button) unlocked
- On request (min. 50 pieces):
  - any stroke from 180 to 1000 mm
  - rear feeding
  - cylinders without locking device
- Fixing brackets, accessories and connector must be ordered separately
- The Redline cylinders can be used for ventilation where compressed air system is available
- For two cylinders on the same vent installation use the version without locking device
- The Redline cylinders are tested one by one.
- Available 500 mm stroke version without locking device (part No. 40334H)

BORE	35 mm
ROD	Ø 12 mm stainless steel
MAX. WORKING PRESSURE	20 bar
TEMPERATURE RANGE	-30° +120° C
FEED	front
THRUST	1900 N at 20 bar
LOCK RESISTANCE	3000 N up to 300° C

STROKE	300 mm	500 mm	700 mm	1000 mm
PART No.	40083L	40085N	40087P	40090K

## Accessories



### PIVOT WITH FLOW LIMITING DEVICE

PART No. 40424I  
For the cylinder assembly with the bracket.  
The flow limiting device allows to reduce the speed during the window opening.



### ROTATING NIPPLE

PART No. 40356N  
It allows the Ø 6x4 mm copper tube connection.  
For the cylinder assembly with the bracket

### NIPPLE WITH FLOW LIMITING DEVICE

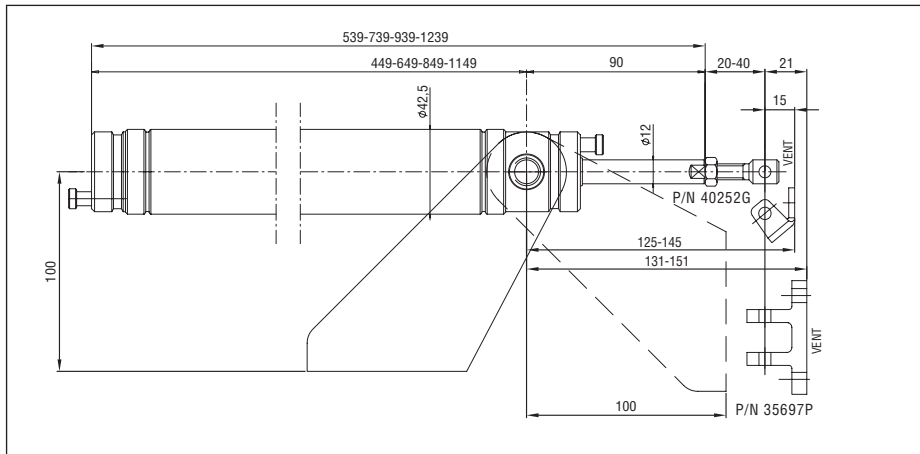
PART No. 36924K  
The same as part No. 40356N but with flow limiting device



Installation on top hinged window with connection to compressed air system



On dome with thermal valve

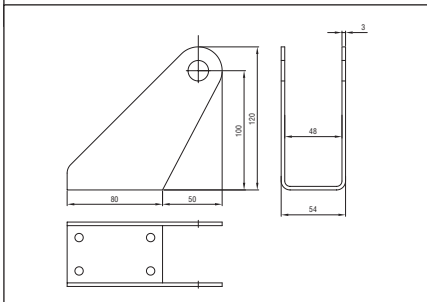


Actuator dim.

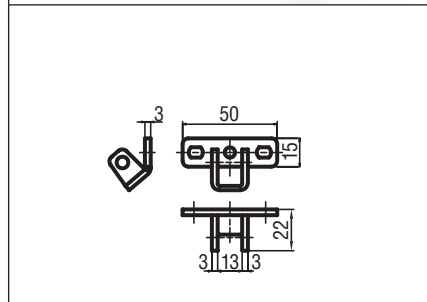
**SPECIFICATION PROSPECTS**

Pneumatic cylinder Ultraflex Control Systems - Red Line, used in smoke and heat extraction systems according to specifications UNI 9494. Aluminium casing. The standard version is provided with mechanical locking device in the end stroke positions in order to keep the windows or domes open even without air pressure. It is possible the direct installation of the thermal valve.

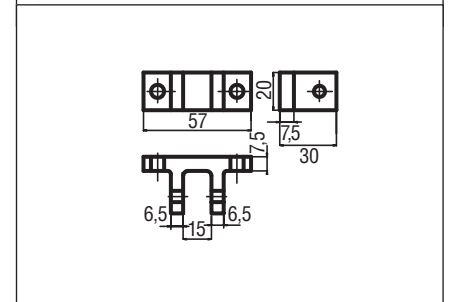
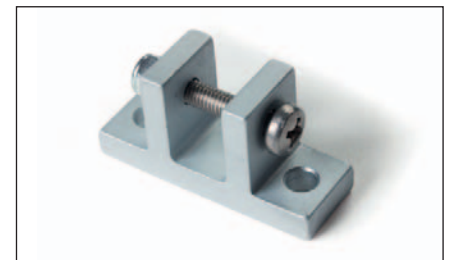
⚠ The instructions for a safe installation are included in the section "SECURITY WARNINGS"



**Front bracket part No. 35696O**  
It allows the fixing of the cylinder to the frame and the cylinder rotation during the opening phase. The bracket is connected to the cylinder by pivot or nipples.



**Steel connector (cylinder-vent) for ventilation part No. 40252G**



**Aluminium connector (cylinder-vent) part No. 35697P**